

# Emergency Management

In Development

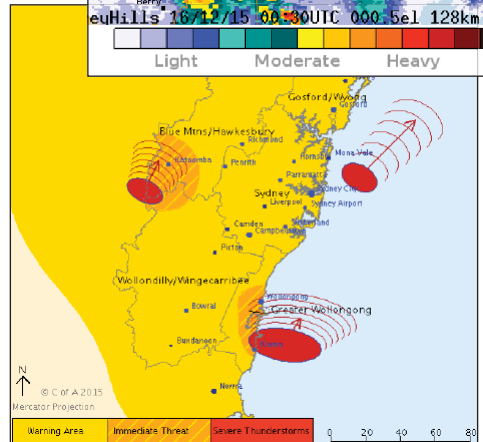
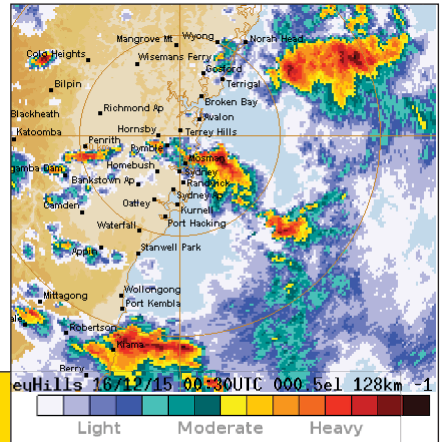
## Public Notifications

The number of Natural Disasters is increasing 3% annually and there is increasing reliance on the public to protect themselves, which requires them to have accurate, timely and relevant information.

The tools currently used to notify and advise the public in emergencies do not provide real-time information and the information they do provide is not personalised and is confusing.

This is contributing to the level of property damage and personal injury and deaths. The public now trust information sources such as Facebook and Twitter more than official information channels from emergency management organisations.

The information available via sources such as Facebook and Twitter often contain 'fake news' which can result in members of the public taking dangerous actions.



Bureau of Meteorology real-time rain radar and storm warnings.



**Karin Olsen**

Little Yengo mountain ablaze near Howes Valley! Tried Bulga Fire no answer and no after hours, tried Nat Parks and no luck either... should residents be concerned as there is nothing on Fires Near Me about this burn? It's a ring of fire near the top of the mountain well ablaze and moving fiercely downward!

Tuesday at 9:28 pm · Like · Reply

**Brilliant**



7 Oct

KevinK03

At least the google maps part of it still works. It even tells you where you are. Would have given it more stars if it told you where the fires were.

# The solution

*A no code platform for developing enterprise level real-time map based collaboration and analytics systems.*



# LA TROBE UNIVERSITY

Zirkarta is supported by the La Trobe Accelerator Program

Zirkarta is a platform that enables a user in an emergency management organisation to make a change to a map with that change visible to all users in real-time.

As changes are made to maps, data is automatically filtered and presented on a public facing website as a moving map, similar to the Bureau of Meteorology rain radars, one of the most heavily visited government web sites in Australia.

This public facing web site can be embedded in existing other web sites.

The location of the person viewing the map is used to provide that individual with personalised, location specific advice.

This provides the community with accurate, real-time, personalised information reducing the rate of property damage, injury and deaths.

