

Emergency Management

In Development

Managing Information During Emergencies

Challenges Solutions (✓complete)

Information management during emergencies is not digitised, resulting in uncertainty and confusion, causing property damage, injuries and deaths.

There are **six big challenges** of emergency information management that cannot be solved as a result of information management not being digitised.

Real-time map based collaboration enables one user to make a change to a map with that change visible to all users in real-time.

Data collected as a by-product of real time map based collaboration enables the six challenges of emergency information management to be solved.

- 1 Responders can only collaborate in real-time by voice.
- 2 No continuous real-time information on emergency location.
- 3 No access to information on advantages created through prevention.
- 4 Predictions not real-time and based on fixed equations.
- 5 Community information and advice is not real-time or personalised.
- 6 No access to information held by the community.

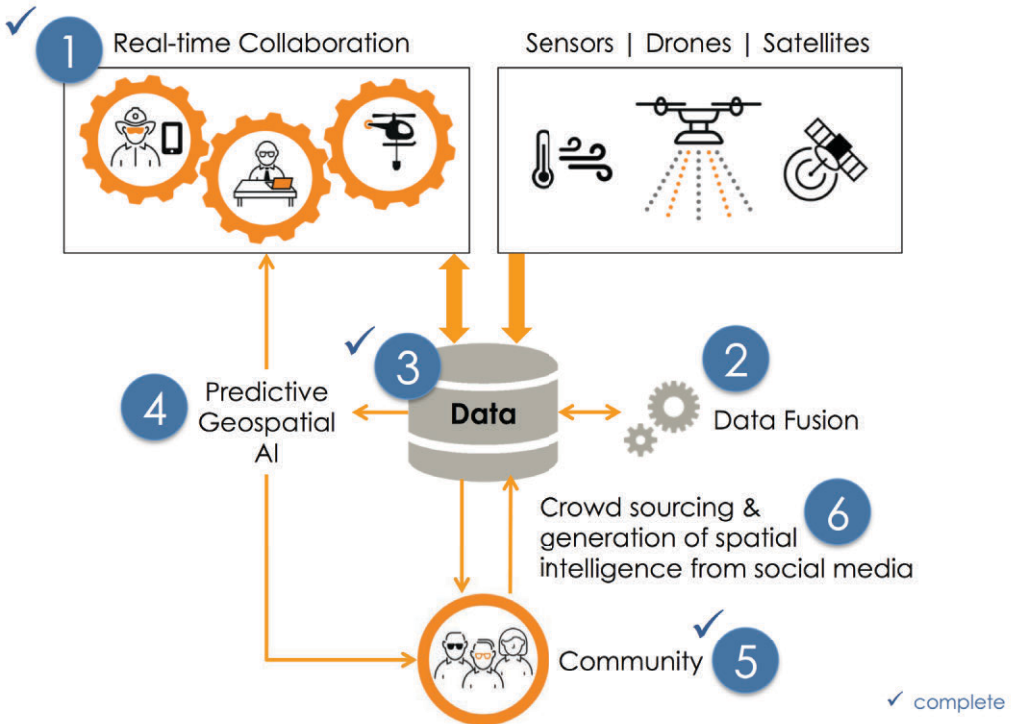
- ✓ 1 **Real-time map based collaboration.**
- 2 Automatic **data fusion** from multiple sources into a single continuous data stream.
- ✓ 3 A single **spatial knowledge base** used for both prevention and response.
- 4 Real-time **predictive geospatial AI.**
- ✓ 5 Real-time moving map and user-location based **personalised advice.**
- 6 Community **crowd sourced** information and automatic generation of **spatial intelligence from social media.**

Integration of Solutions



LA TROBE
UNIVERSITY

Zirkarta is supported by the
La Trobe Accelerator Program



Each solution can be implemented individually or can be integrated into an information management engine – where the output from each solution generates the inputs required by other solutions – reducing uncertainty, confusion, damage, injuries and even deaths.